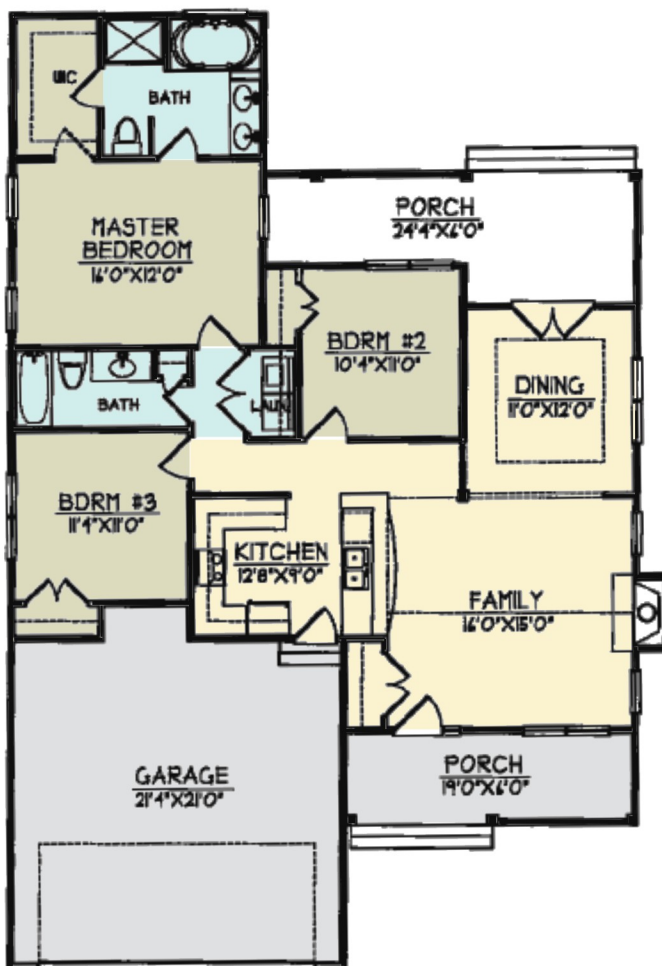


# The Brayson

1323 Sq Ft



SQUARE FOOTAGE	
FIRST FLOOR:	1323 SQ. FT.
GARAGE:	480 SQ. FT.
WIDTH:	43'-0"
DEPT:	62'-4"



[www.jandndevelopers.com](http://www.jandndevelopers.com)  
Serving the Goldsboro, NC area

